



# PCC "START OF SUMMER" UPDATE

## JUNE 21, 2017

### "GOING THE DISTANCE: WALK SOFTLY, AND CARRY A LIGHT BURDEN"

GUEST PREACHER: THE REVEREND BRENDA HOFFMAN

SUNDAY, JUNE 25 • 10:15AM • INDOOR SERVICE



Consider that life is often compared to a journey. There is a beginning, and an end point, but a journey is what happens along the way, that middle part, marked by twists and turns, hills and valleys, storms and sunshine. What steps can we take to prepare for it, or, as Jesus directed the disciples, are we to take nothing for the journey?



**All-Community Ecumenical  
Worship Service:**  
People's Congregational Church and  
Bethlehem Lutheran Church

**Sunday  
July 2, 2017  
9:30 am**

**Lakeside Park in Bayport**

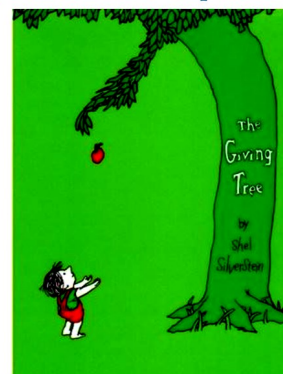
In case of rain the service will be held at:  
Bethlehem Lutheran Church  
490 4<sup>th</sup> St. N., Bayport, MN 55003

Bring a lawn chair and a non-perishable food item for the Food Shelf.  
Monetary offering will go to Valley Outreach Emergency Fund

Sunday, July 9 ~ INDOOR WORSHIP ~ 10:15AM

SECOND IN THE SERIES:  
"SPIRITUAL LESSONS FROM THE CLASSICS OF  
CHILDREN'S LITERATURE"

*Lessons within these beautiful and classical tales  
and their connections to scripture and our lives*



"The Giving Tree"

*This special service will focus on Peter Favilla  
and, as our special guest, the woman  
who received his bone marrow*



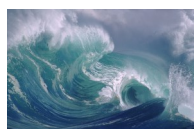
#### OUTDOOR WORSHIP

SUNDAY, JULY 16  
10:15AM

"THE SACRED ELEMENTS:  
WIND, EARTH, FIRE, WATER"  
*Exploring our Spiritual  
Connection to these Sacred  
Elements in Word and Life*

#### "Waters of Life"

*The essential element to all  
life on the planet . . .*  
FROM THE BEGINNING



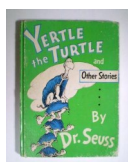
#### INDOOR WORSHIP

SUNDAY, JULY 23  
10:15AM

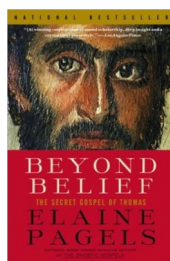
"SPIRITUAL LESSONS  
FROM THE CLASSICS OF  
CHILDREN'S LITERATURE"

#### "Yertle the Turtle"

*Your Majesty, Please, I  
Don't Like to Complain,  
But Down Here Below, We  
are Feeling Great Pain*



#### EXPLORING SCRIPTURE AND THEOLOGICAL DISCUSSION GROUP



Our Exploring Scripture and Theological Discussion Group has evolved into a wonderful time of stimulating scripture exploration, discussion, and fellowship. . . (not to mention coffee, and treats!) Newcomers are warmly welcomed! This summer we are tackling the Gospel many scholars believe should have been included in our Bibles but was left out, "The Gospel of Thomas." Fragments discovered in 1898 and a full translation discovered in 1945, shed even more insight on what Jesus said and perhaps broadens our view of who he was.

Summer Schedule for Exploring Scripture and Theological Discussion:

July 19th: 9:30am Review of Session 1 & Exploring the Theology in Thomas

August 16th: 9:30am Does it matter?

*Regular weekly Wednesday Sessions resume in mid-September.*

*We'd love to have you explore with us!*